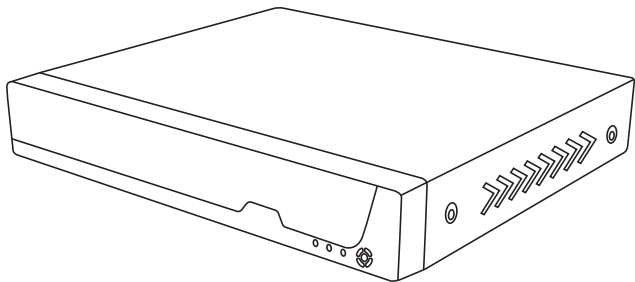


Quick Setup Guide

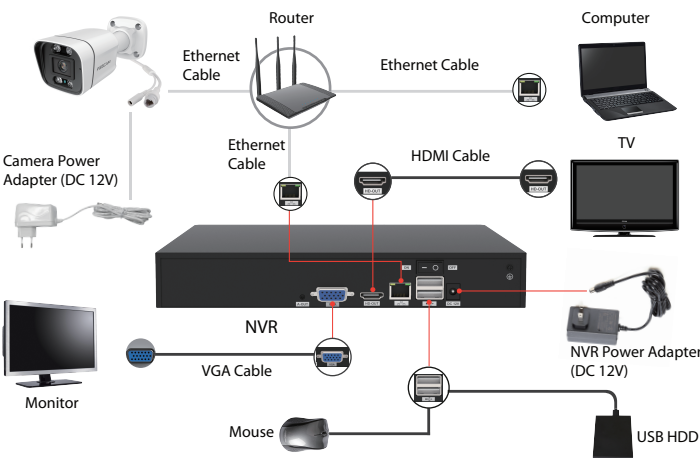
Network Video Recorder



For detailed manuals, tools, etc., please visit foscam.com/downloads.

V2.0
305503001056

4 Device Connection



Procedure

1. If you want to use Foscam VMS or App, the NVR needs to be connected to a router. The NVR and IPC must be in the same LAN so that the IPC can be searched to add to the NVR.
2. Connect your display to one of the video outputs (VGA or HD-OUT interface).
3. Connect an external storage device to the USB interface of the NVR as a backup.
4. Connect a mouse to the USB interface.
5. Some devices need to connect to your router using an Ethernet cable, including the NVR, PC and IP Camera.
6. Connect the power adapter to the power input port.
7. The NVR DHCP server will open if it does not detect and connect a router within the 30s, which is used for searching and connecting to the IPC on the PoE NVR or switch.

1 Before You Start

Package Contents

NVR	Ethernet Cable
DC Power Adapter	USB Mouse
Quick Setup Guide	Screw Pack
Warning Card	Data Wire and Power Wire of the Hard Drives

Security Warning

- Foscam cameras and NVRs require good security practices to safeguard your privacy. You should regularly change your camera or NVR password which is the combination of numbers, letters and symbols.
- You should update your camera or NVR regularly. Make sure your camera or NVR has the latest firmware installed for your specific model and better experience.
- Please keep the device horizontally and avoid inclination or inversion.
- Do not install the NVR in humid and dusty environment.
- Put the NVR in drafty environment in case of ventilation port being blocked.
- Don't touch the power switch with wet hand or damp items to avoid shock.
- Do not splash liquid or metal filing on the NVR To avoid short-circuit fault or blaze.
- Explosion may happen because of improper replacement of battery,

- 1 -

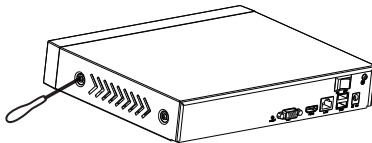
do not replace it by yourself; If you need, make sure it is the same type of battery. And do not open or repair the battery.

- Do not take the device apart when it is operating (or connecting to power).
- Please use suitable and professional hard disk to ensure continues and stable recording.
- Lightning protection is needed when device is connected to communication cables.
- Check the power supply to avoid damage because of voltage mismatch.
- Make sure the NVR working within suitable temperature and humidity environment.
- Short circuit may occur when dust become wet on circuit board. Please clean the dust on connectors and NVR case.
- Operating Temperature: 0°C ~ 50°C (32°F ~ 122°F).

2 Hard Disk Installation

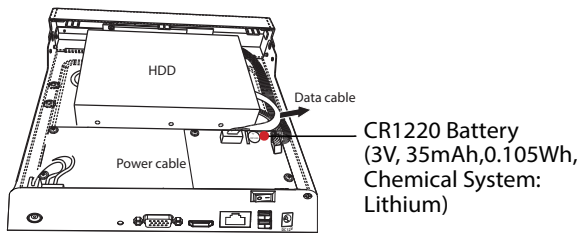
WARNING

- Before installing a hard disk drive (HDD), please make sure the power is disconnected from the NVR.
 - It is recommended that a hard drive be used in 7200 high-speed or above.
1. Remove the cover from the NVR by unfastening the screws on the rear and bottom.



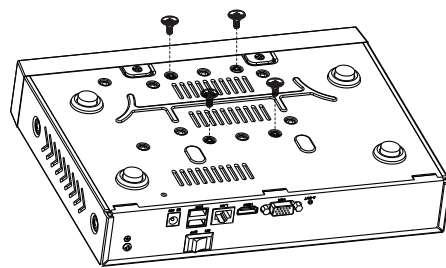
- 2 -

2. Connect one end of the data cable and power cable to the motherboard of NVR and the other end to the HDD.



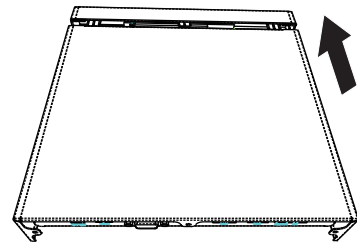
CAUTION:

- Must be disposed of properly, always follow the local waste and recycle laws when you get rid of the used battery
 - May explode if damaged or disposed of in fire.
 - Do not short-circuit.
 - Do not disassemble
 - Do not use if soaked into water.
 - Do not attempt to disassemble, open or service the battery. Non rechargeable.
 - If the battery level is low, please replace the button battery with a new one according to the model after disassembling in steps 1 and 2.
3. Place the HDD on the bottom of the device and then fasten the screws on the bottom to fix the HDD.

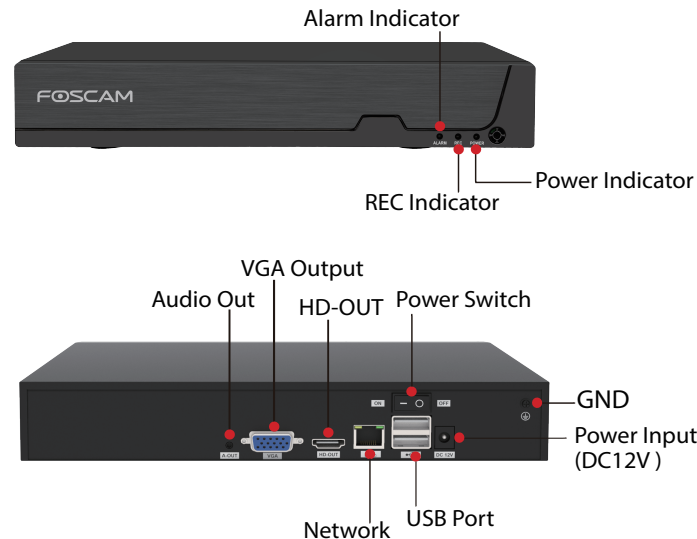


- 3 -

4. Re-install the cover of the NVR and fasten screws.



3 NVR Rear Panel



- 4 -

6 Setup Wizard

The Setup Wizard can walk you through some important settings on the NVR.

1. Setting the time.

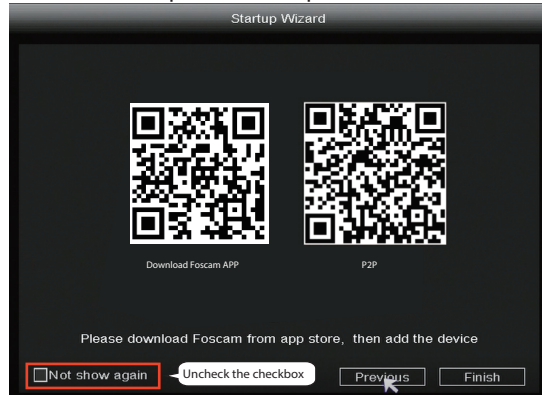


2. Format HDD. Click the **Format** button to set up the HDD. Note that this will delete all files on the HDD. HDD Full Setting. Select Stop Record and Overwrite.

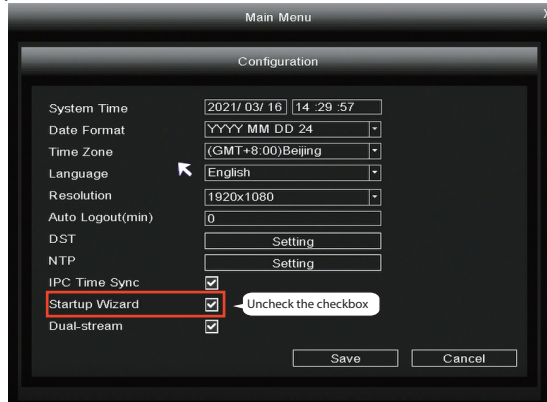


- 7 -

3. P2P. If you want to know the UID of the device, please scan the QR code. If you don't want to use the Setup Wizard next time, uncheck the Setup Wizard checkbox. Click the **Finish** button to complete the setup wizard.



or Right-click→ **Main Menu** → **Configuration** → uncheck the **Setup Wizard** checkbox. Click the **Finish** button to complete the setup wizard.



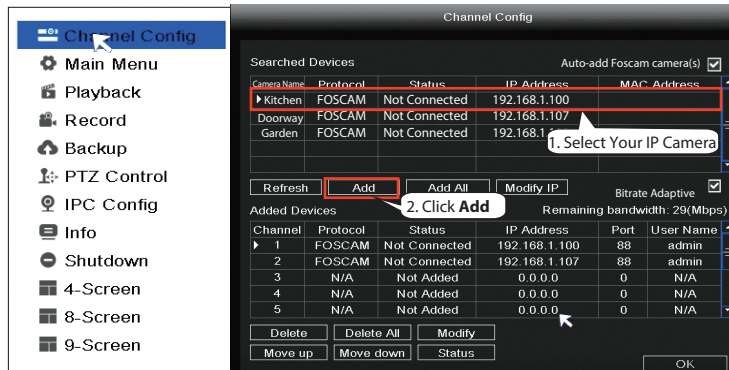
- 8 -

7 Add IP Camera

You can add an IP Camera that is connected to the internet on the NVR.

1. Right-click on main interface, select **Channel Config**.
2. Select **your IP Camera** or **Auto-add Foscam camera(s)**
3. Click **Add**.
4. Enter username and password of the camera. If your camera is in the factory default state, you do not need to enter the user name and password.
5. Click **OK**.

Note: If the camera is added during factory default status, the username and password will be the same as the NVR.



Select a protocol depending on which IP Camera you have.

- FOSCAM protocol: The High Definition (HD) IP Cameras for Foscam.
- ONVIF protocol: IP Cameras which support ONVIF protocol.

- 9 -


8 Recording

After the IP Camera is added successfully to the NVR, enable Scheduled Record functionality to the following methods when in the Live View mode.

8.1 Scheduled Record

Right-click → **Main Menu** → **Record** → choose recording channel → **Save** (Actually, the NVR system have default set 24h scheduled recording).

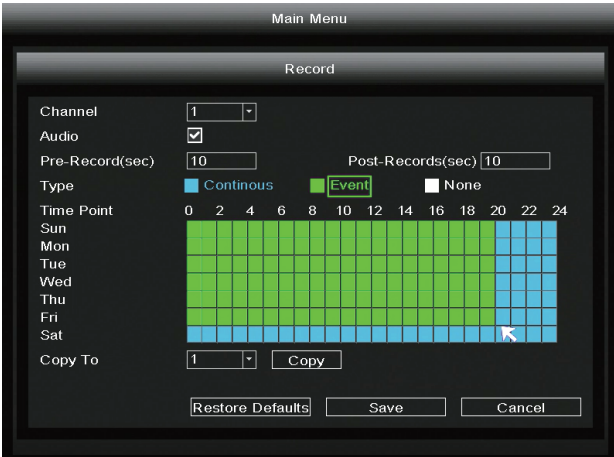


In the Live View mode, the icon  is at the bottom right of the screen for each channel, indicating recording is on going.


- 10 -

8.2 Event Record

If you want to start event recording, select **Event** in Type, use the left mouse button to select the time (turned to green), if the other channels operate in the same way, select **Copy**.

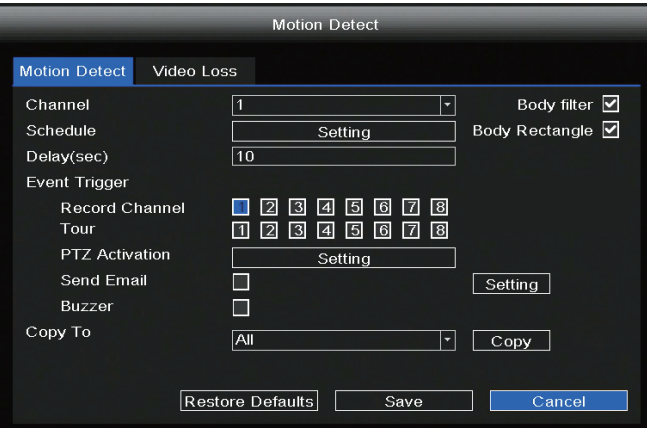


Note: The default alarm type is **Motion Detect**

In the Live View mode, the icon  is at the bottom right of the screen for each channel, indicating recording is on going.

- 11 -

Set the event alarm according to the following method Right-click → **Main Menu** → **Event** → **Motion Detect** → choose target channel, setting Schedule, Delay, Record Channel, Tour, PTZ Activation, Send Email Buzzer → **Save**.



9 Playback

You can see the recording information, include Manual Record, Alarm Record, Schedule Record.

Right-click → **Main Menu** → **Playback** → choose channel and date → click timeline to check record.

- 12 -



Note

The maximum number of 8 playback video channels have been reached, please deselect other channels first to continue.

10 Remote Access

You can also access the NVR or IP Camera directly through Foscam VMS and Foscam App.


10.1 Access to the Foscam VMS

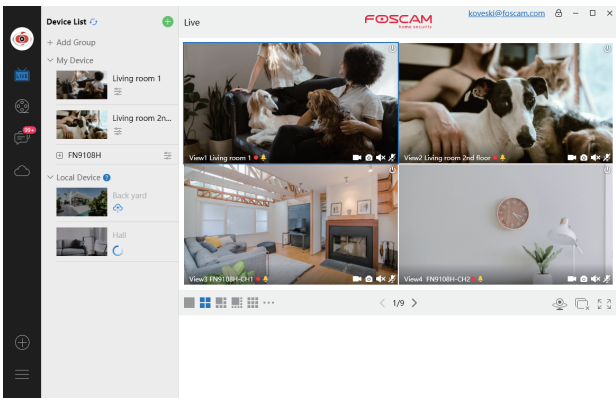
Foscam VMS is a new tool for PC. It does not require plug-ins and is compatible with Windows & Mac, It supports all Foscam HD cameras and up to 36 cameras at the same time. If you would like to manage multiple cameras, we suggest you install the Foscam VMS. You can download the "Foscam VMS" from foscam.com/vms, and can download the "Foscam VMS" Mac version from the APP store: <https://apps.apple.com/cn/app/foscamvms/id1521202507?mt=12>

- 13 -



Note: For the best experience, please update Foscam VMS to the latest version!

3. Preview: click device in Lan Device list to enter preview interface, select a channel to view it's picture, click  to enter, as follow shows:



- 14 -

10.2 Access to the Foscam App

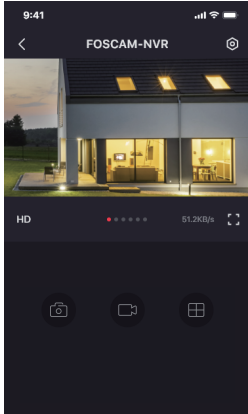
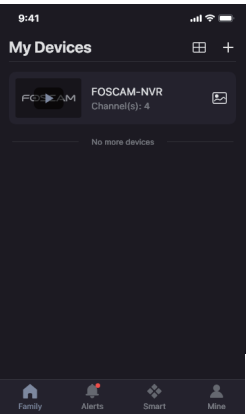
1. You can also simply go to the App Store or Google Play and search for the term "**Foscam**". Download the APP to your smartphone, or scan the QR Code on the below, it will take you to the download page to install the **Foscam APP**.



2. Run the Foscam APP, and then register for a Foscam account.

3. Device Adding: Once logged in, you can tap the "+" button on the APP, after that scan the QR code, which is located at the bottom of your NVR.

4. Preview: click device in list to enter preview interface, select a channel to view it's picture, as follow shows:



Note: The Foscam app is subject to the latest version, and its functions are constantly iterated.

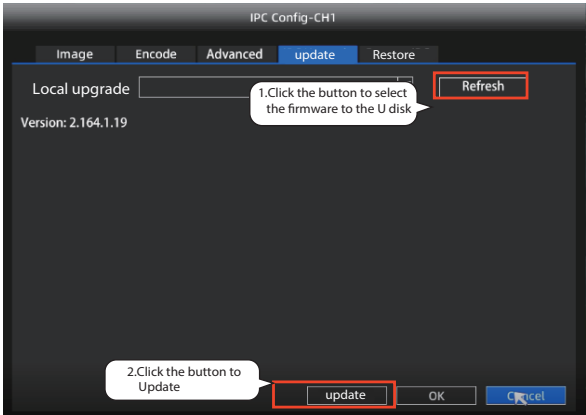
- 15 -

11 Upgrade

1. You can upgrade your NVR and cameras system with local Software.

NVR Upgrade:


Download the firmware to the U disk → Insert U disk to NVR USB port → Right-click → **Main Menu** → **Update** → click **Refresh** → click **Update** to upgrade your NVR.



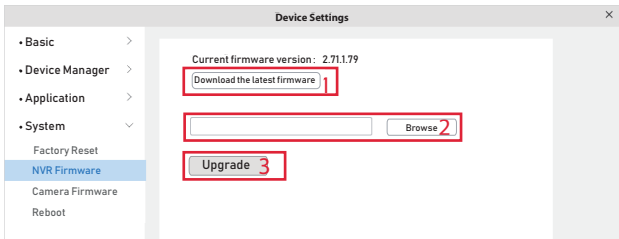
Note:

Don't shut down the power during upgrade. After upgrading, NVR restarts.

2. You can upgrade the firmware of your NVR with Foscam VMS.

Open and Login Foscam VMS, select  Setup > **System** > **System Upgrade**.

- 16 -

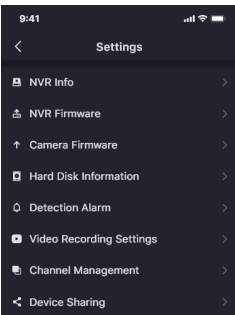


Firmware upgrade step:

- 1 Click "**Download the latest firmware**" button to download the latest firmware to your computer.
- 2 Click "**Browse**" button, choose file firmware version you want to upgrade on the web page.
- 3 Click "**Upgrade**" button and wait till it's finished.

3. You can upgrade the firmware of your NVR and cameras with Foscam App.

Open Foscam APP and Login the NVR, select Settings > **NVR Firmware Upgrade**.



- 17 -

Note:

In all upgrade methods, don't shut down the power during upgrade. After upgrading, NVR restarts.

12 Product Performance

Power Supply: DC 12V 2.0A 24W

13 Technical Support

If you have problems with your Foscam device, please contact the reseller you purchased from, or you can e-mail the headquarters technical support team: support@foscam.com
Your valuable comments and suggestions on improving Foscam products are welcomed!

- 18 -

FOSCAM
home security



CE Certificate statement Website:
<https://www.foscam.com/company/ce-certificate.html>

Exporter and Importer Information Opened to Public:
<https://www.foscam.com/company/open-information.html>

Manufacturer: Shenzhen Foscam Intelligent Technology Co., Ltd
Addr: Room 902, Building 1B, Shenzhen International Innovation Valley, Xingke 1st Street, Nanshan District, Shenzhen, Guangdong, China, 518055
Support email: support@foscam.com



FAQS



Foscam APP



Facebook

www.foscam.com

Due to product upgrades and other reasons, this guide may be slow to update, resulting in slight inconsistencies with the official website information. Please take the official website (www.foscam.com) information as the current standard.

- 19 -