

## Quick Installation Guide

# FOSCAM®

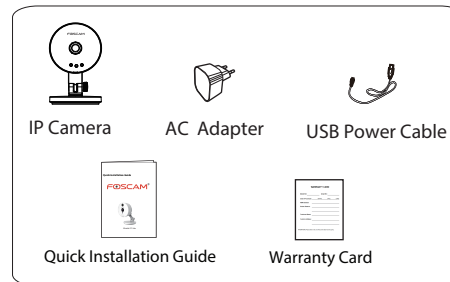


Model: C1 Lite

V1.0  
EQC00006

## 1 Instructions

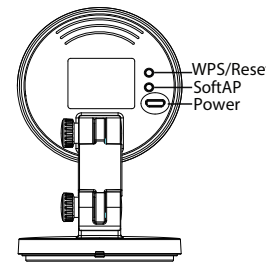
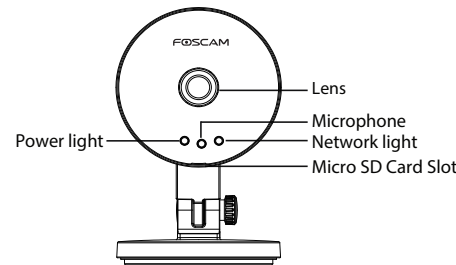
### Package Contents



### Security Warning

- Foscam cameras and NVRs require good security practices to safeguard your privacy. You should regularly change your camera or NVR password which is 8-10 numbers, letters, symbols combination.
- You should update your camera or NVR regularly. Make sure your camera or NVR has the latest firmware installed for your specific model and better experience.

## 2 Hardware Introduction



## 3 Download Foscam APP

To install the Foscam APP on your smartphone, you can choose either of the following methods:

- If you have a QR Code APP on your phone, scan the code below.



- You can simply go to the App Store or Google Play Store and search for the term "Foscam". Find the app that appears with the same icon as shown above, and download it to your device.


### Before you continue, please note:

- Make sure your wireless router is enabled DHCP feature, and connected to internet.
- Make sure your smartphone is connected to your wireless router and located near the camera.

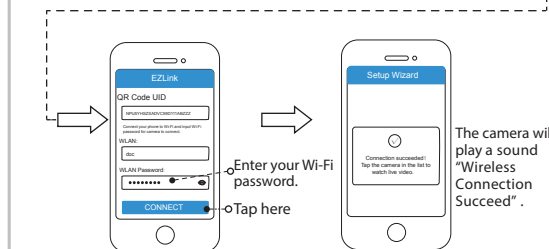
## 4-1 Wireless Connection

You can add the Foscam camera using a smartphone.



1. Connect the power adapter to the camera. Then the camera will play a sound "Ready for WiFi configuration", It indicates that the camera is in EZLink mode.
2. Run the Foscam APP , and then register for a Foscam account. After logging in, please follow bellow steps to add your camera.

## 4-2 Wireless Connection

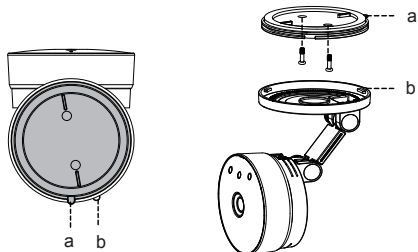


### Note:

If your device fails to connect to the Wi-Fi using the Setup Wizard, you can also use WPS mode or the SoftAP connection. Please refer to the User Manual on the Foscam website at <http://www.foscam.com>.

## 5 Hardware Installation

1. Rotate the base of the camera until points a and b are aligned, this allows for the mounting plate to be removed.
2. Install the mounting plate on a wall or ceiling with supplied fixing screws.
3. Align points a and b to insert the camera base to the mounting plate. Rotate so that points a and b are no longer aligned, this attaches the camera securely to the base.



## 6-1 Access the IP Camera

### ■ Foscam Cloud Service

It is recommended to use our web portal:  
[www.myfoscam.com](http://www.myfoscam.com) on PC.

You can have the following good experience on this web.

- It's so easy to access and operate all of your cameras.
- You will use the latest features first on the website. For example you can use cloud storage and play your record on cloud, etc.

If you have registered on the Foscam APP, you also can use this account log in and access the camera directly via browser.

## 6-2 Access the IP Camera

### ■ Foscam APP

You can view the video of your camera via the Foscam APP anytime, anywhere.

Only with the "Foscam" APP, you can experience new features including EZLink, Online-Update, Message Push, etc. Any third-party APP (other than "Foscam") does not experience these features.

### ■ Browser Access

If you want more complicated features, you can download the "Equipment Search Tool" from <http://www.foscam.com> to your computer and access the camera directly with it.



## 7-1 Important Notice

### ■ Camera Username / Password

The camera username / password is used to access your camera management interface. The factory default value is admin / (blank).

If you have forgotten the camera's username or password, you need to press and hold the "Reset" button on the camera with the camera powered on. After hearing the voice prompt, release the button. The camera will automatically reboot and restored factory settings.

After restoring to factory settings, you need to re-configure the Wi-Fi connection of your camera.

### ■ Firmware Upgrade

Please download the latest version to upgrade your camera from [www.myfoscam.com](http://www.myfoscam.com) regularly. You also can finish upgrading on Foscam APP with new feature "One-key Online Upgrade".

## 7-2 Important Notice

### ■ Foscam cloud service Account / Password

Foscam cloud service account/password is the Account / Password that registered on Foscam cloud APP or Foscam cloud service website.

### ■ Safety Tips

- Please check the power adapter before using the camera.
- Please lock and fix the camera and brackets for avoiding falling.
- For reducing the risk of fire or electric shock, please preventing cameras to damp and rains.
- Cameras are precision electronic equipments, please put it in a position where children can't reach.
- Change your default port in greater range, because hackers often target default ports.
- Check the logs of your Foscam cameras often. Foscam Cameras have embedded logs which tell you which IP addresses are accessing the camera.

## 8 Technical Support

If you have problems with your Foscam IP Camera, please contact the Foscam reseller you purchased from, or you can e-mail the Foscam headquarter technical support team: **tech@foscam.com**. Your valuable comments and suggestions on improving Foscam products are welcomed!

**FOSCAM®**



CE Certificate Website:  
<http://www.foscam.com/company/ce-certificate.html>

ShenZhen Foscam Intelligent Technology Co., Ltd

[www.foscam.com](http://www.foscam.com)