

How to upgrade firmware

Suitable for MJPEG cameras: FI8904W FI8905W FI8906W FI8905E

Please check the model number and current firmware version before upgrading. You can find your model number on the sticker and your firmware version under Device Status menu.

Only firmware 11.35.2.63 **can** upgrade to this version, the other versions cannot upgrade to this version.

Updating with wrong firmware could severely damage and/or break your camera, please make sure the firmware is correct and update at your own risk.

Note: After upgrading to this version, it cannot downgrade to previous versions.

Preparation for upgrading:

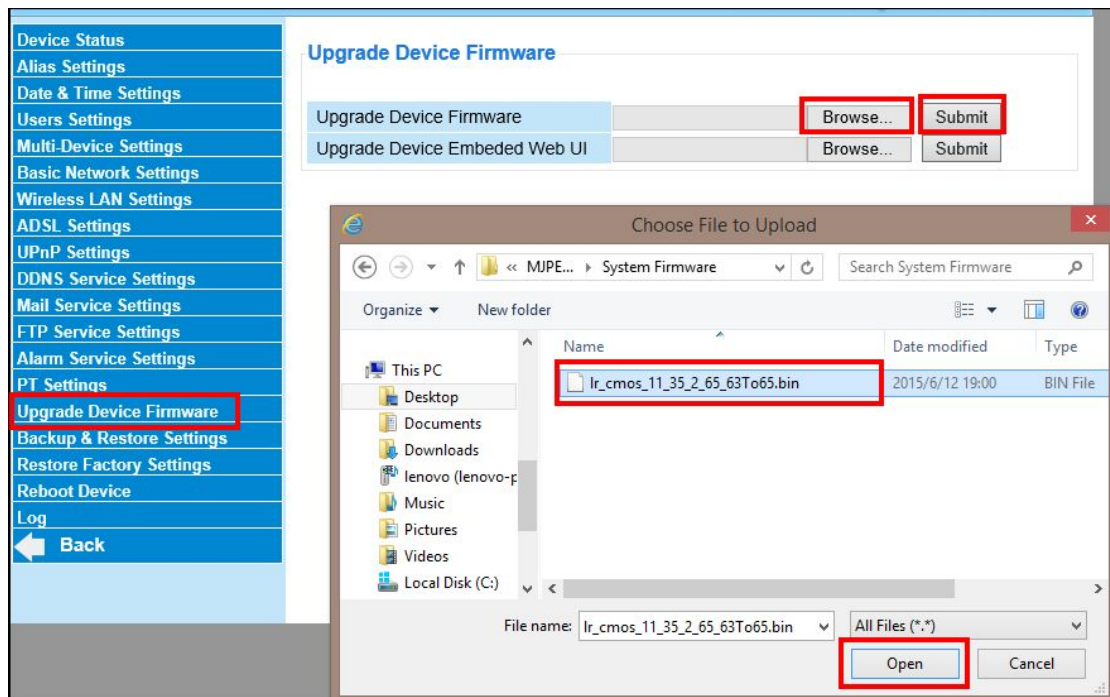
- 1) Please restart your camera before the upgrading;
- 2) Plug in the Ethernet cable to upgrade firmware, not via wireless;
- 3) Upgrade the system firmware firstly and web UI secondly;
- 4) Keep power on during the upgrading.

Step 1: Login your camera as an administrator, and go to **Device Management** → **Upgrade Device Firmware**.

Step 2: Update System firmware firstly.

Click **Browse** → select system firmware **lr_cmos_11_35_2_65_63To65.bin** → click **Open** → click **Submit**. After camera restarting itself, the system firmware is loaded successfully.

Note: Do not shut down the power of the camera before IP Camera Tool search the IP again!

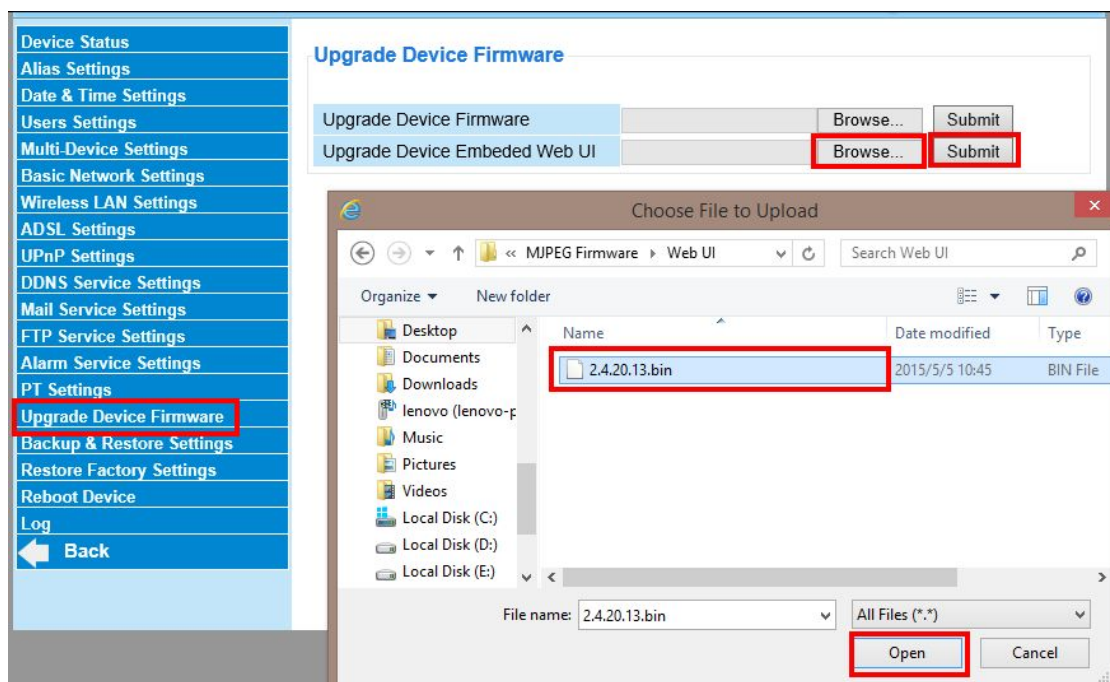


Step 3: Update Web UI firmware secondly.

Click **Browse** → select Web UI firmware **2.4.20.13.bin** → click **Open** → click **Submit**.

After camera restarting itself, the Web UI is loaded successfully.

Note: Do not shut down the power of the camera before IP Camera Tool search the IP again!



Step 4: You can check new firmware versions under **Device Status** page.

Device Status

Device ID	C4D6553A8209
Device Firmware Version	11.35 2.65
Device Embedded Web UI Version	2.4.20.13
Alias	FI8904W
Alarm Status	None
DDNS Status	No Action
UPnP Status	No Action

End

by Foscam Technical Support Team