

Upgrade Guidance for HD cameras

Suitable for FI9803EP, FI9803P, FI9853EP, FI9851P

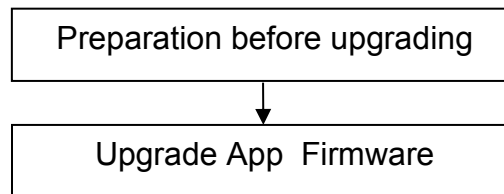
Attention: After upgrading, please clear the cache of your browser, then it updates plugin when log-in next time.

This firmware is for HD cameras, FI9803EP, FI9803P, FI9853EP, FI9851P. Please check your camera model on the bottom sticker. Updating with the wrong firmware could severely damage and/or break your camera. Please make sure the firmware is correct.

Note:

System firmware 1.5.1.11, App firmware 2.x.1.12 or 2.x.1.125 **can** upgrade to this version;

Upgrading procedure (let's take FI9851P for example to finish the upgrading):



Preparation before upgrading:

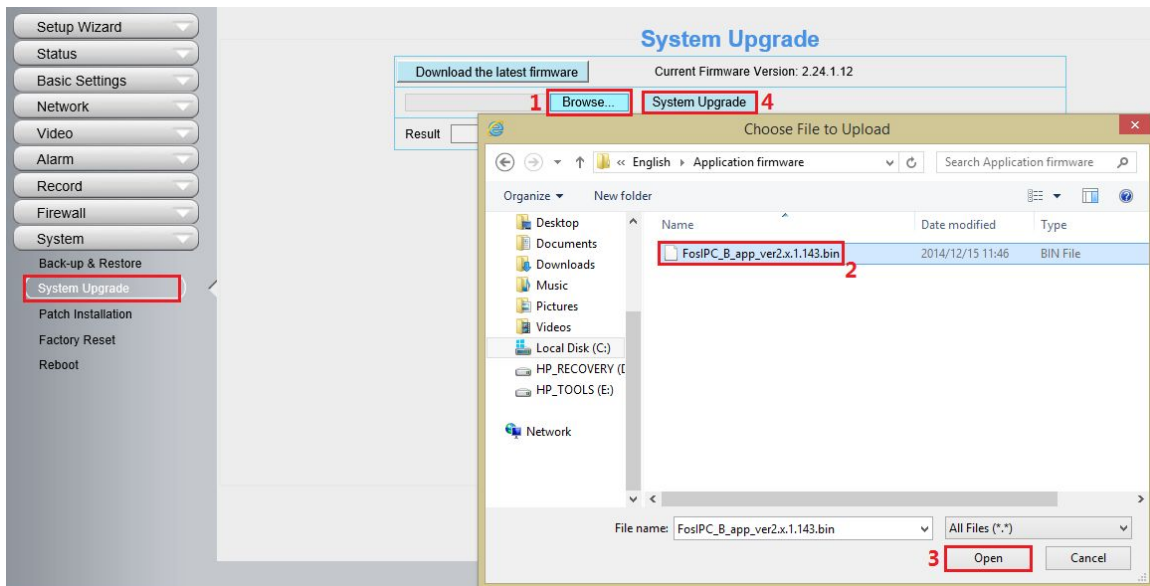
1. Please restart your camera before the upgrading;
2. Connect camera to router with an Ethernet cable before upgrading;
3. DO NOT upgrade firmware via wireless;
4. DO NOT upgrade firmware over internet, just finish it in LAN;
5. Keep power on during the upgrading;
6. Logging your camera as administrator first, upgrade firmware on web page.

Operation 1: Upgrade the app firmware version.

Step 1: Login again, go to **Settings → System → System Upgrade**.

Click **Browse** → choose **FosIPC_B_app_ver2.x.1.143.bin** → click


Open → Click **System Upgrade**.



Step 2: “Upgrading, do not power off ... Xs” pop up, camera IP will disappear from the IP Camera Tool. Then camera will reboot itself, DO NOT power off the camera, please wait till the camera IP reappear in the IP Camera Tool.



Operation 2: Login again to check the **System Firmware Version, Application Firmware Version** and **Plug-In Version**.

| Device Information | |
|---|---------------------|
|  Refresh | |
| Camera Model | FI9851P |
| Camera Name | FI9851P |
| Camera ID | 00626E506C53 |
| Camera Time | 2014/12/15 19:05:23 |
| System Firmware Version | 1.5.1.11 |
| Application Firmware Version | 2.24.1.143 |
| Plug-In Version | 3.1.0.10 |

Congratulations, your camera successfully upgraded to the latest firmware!

Note:

1. You'd better re-install the plug-in, in case it did not upgraded.
2. The correct firmware version after upgrade:

| | |
|------------------------------|------------|
| System Firmware Version | 1.5.1.11 |
| Application Firmware Version | 2.24.1.143 |
| Plug-In Version | 3.1.0.10 |

Attention: After upgrading, please clear the cache of your browser, then it updates plugin when log-in next time.

End

--- by Foscam Technical Support Team