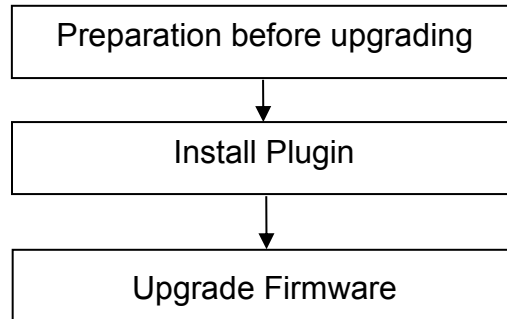


## Upgrade Guidance for C1

This firmware is for HD cameras C1, please check your camera model on the back of camera. Updating with the wrong firmware could severely damage and/or brick your camera. Please make sure the firmware is correct.

**Note:**

System firmware 1.9.1.12, App firmware 2.x.1.36 or 2.x.1.37 **can** upgrade to this version.



**Preparation before upgrading:**

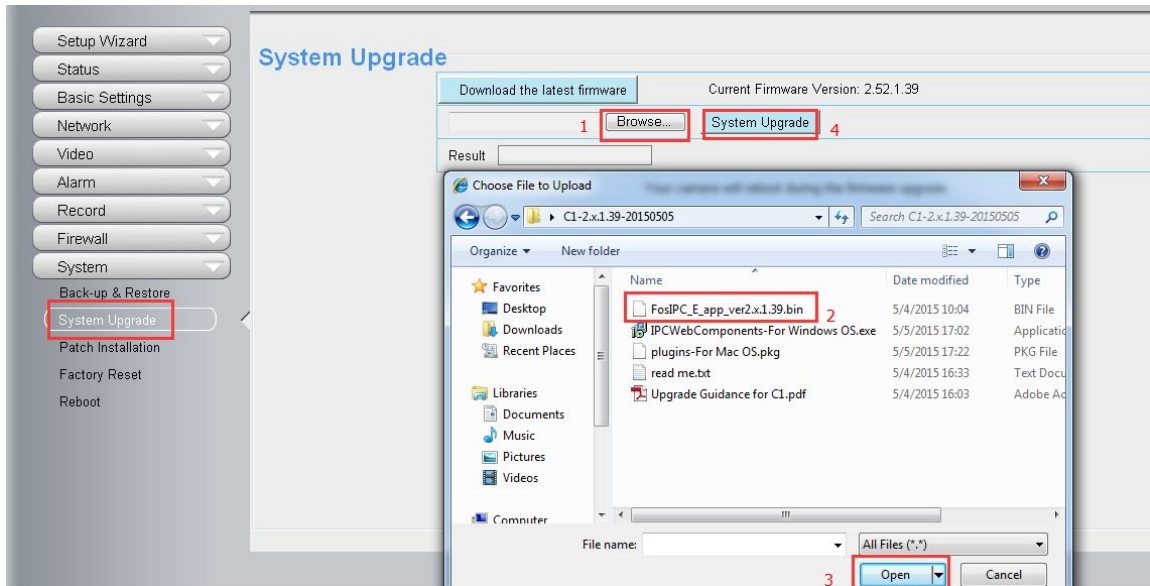
1. Please restart your camera before the upgrading;
2. Connect camera to router with an Ethernet cable before upgrading;
3. DO NOT upgrade firmware via wireless;
4. DO NOT upgrade firmware over internet, just finish it in LAN;
5. Keep power on during the upgrading;
6. Logging your camera as administrator first, upgrade firmware on web page.

**Operation 1: Install the latest Plug-in.**

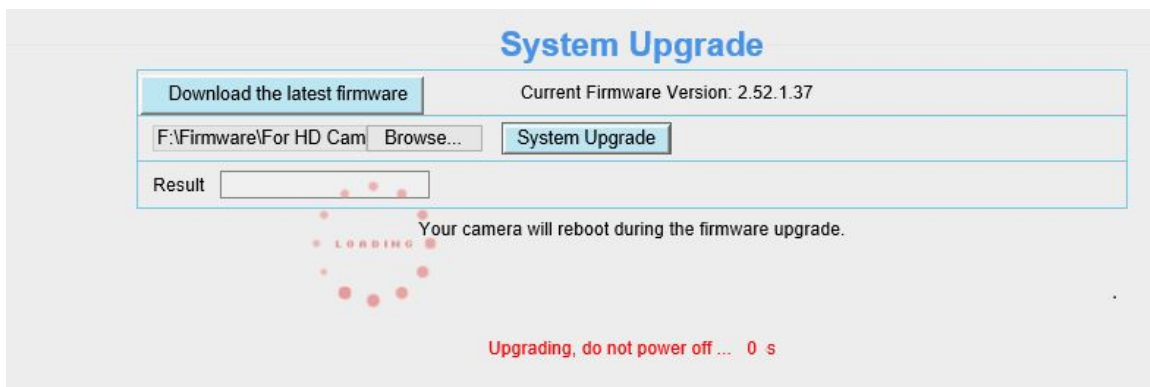
Unzip the firmware package, If your computer is with Windows OS, please choose the **IPCWebComponents-for Windows OS.exe**, and double click it and follow the install procedures to install the latest plug-in on your computer. While if your computer is with MAC OS, please choose the **plugins-For Mac OS.pkg**, and double click it and follow the install procedures to install the latest plug-in on your MAC.

**Operation 2: Upgrade the Firmware.**

**Step1:** Login your camera, go to **Settings → System → System Upgrade**.  
Click **Browse** → choose **FosIPC\_E\_app\_ver2.x.1.39.bin** → click **Open** → Click **System Upgrade**.



**Step 2: “Upgrading, do not power off ... Xs”** pop up, camera IP will disappear from the IP Camera Tool. **Then camera will reboot itself, DO NOT power off the camera, please wait till the camera IP reappear in the IP Camera Tool.**



**Step 3:** Login again to check the **System Firmware Version, Application Firmware Version** and **Plug-In Version**.

Device Information	
Refresh	
Camera Model	C1
Camera Name	C1
Camera ID	00626E5612DC
Camera Time	2015/05/05 03:12:20
System Firmware Version	1.9.1.12
Application Firmware Version	2.52.1.39
Plug-In Version	3.3.0.3

**Congratulations**, your camera successfully upgraded to the latest firmware!

**Note:**

1. You'd better re-install the plug-in, in case it did not upgraded.
2. The correct firmware version after upgrade:

System Firmware Version	1.9.1.12
Application Firmware Version	2.52.1.39
Plug-In Version	3.3.0.3

**End**

--- by Foscam Technical Support Team