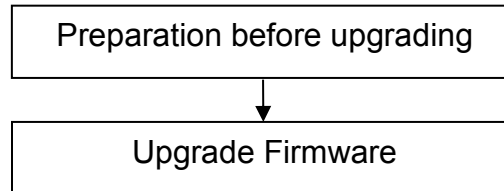


Upgrade Guide for FosBaby

This firmware is for FosBaby, please check your camera model on the sticker. Updating with the wrong firmware could severely damage and/or break your camera.

Note:

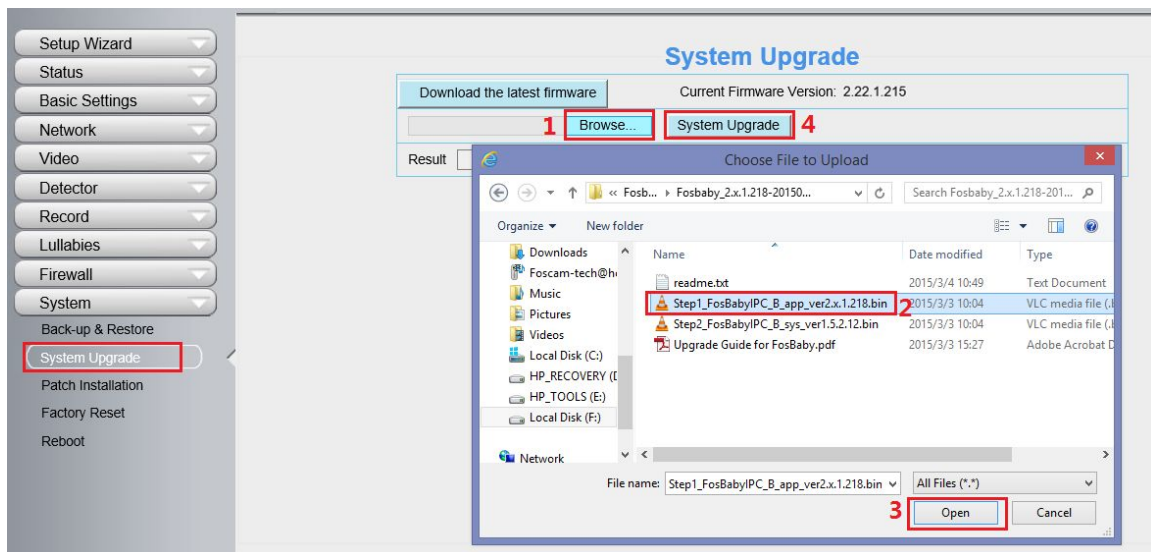
System firmware 1.5.1.11 or 1.5.2.12, App firmware 2.22.1.153 or 2.22.1.155 or 2.22.1.215 **can** upgrade to this version.



Preparation before upgrading:

1. Please restart your camera before the upgrading;
2. DO NOT upgrade firmware over internet, just finish it in LAN;
3. Keep power on during the upgrading;
4. Unplug the SD card before upgrading;
5. Logging your camera as administrator first, upgrade firmware on web page.

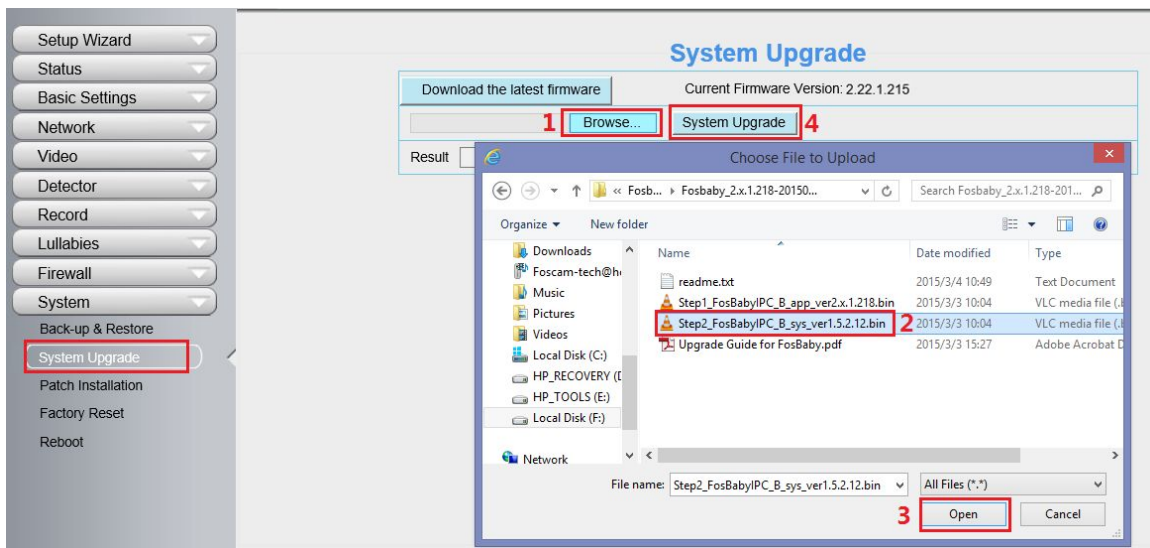
Step1: Log-in your FosBaby, go to **Settings** → **System** → **System Upgrade**. Click **Browse** → choose **Step1_FosBabyIPC_B_app_ver2.x.1.218.bin**, click **Open** → click **System Upgrade**.



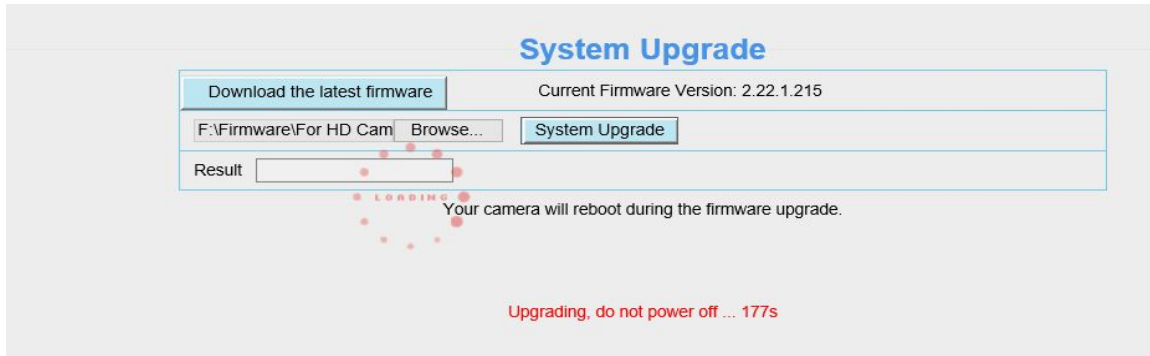
Step 2: “Upgrading, do not power off ... Xs” pop up, camera IP will disappear from the IP Camera Tool. Then camera will reboot itself, **DO NOT** power off the camera, please wait till the camera IP reappear in the IP Camera Tool.



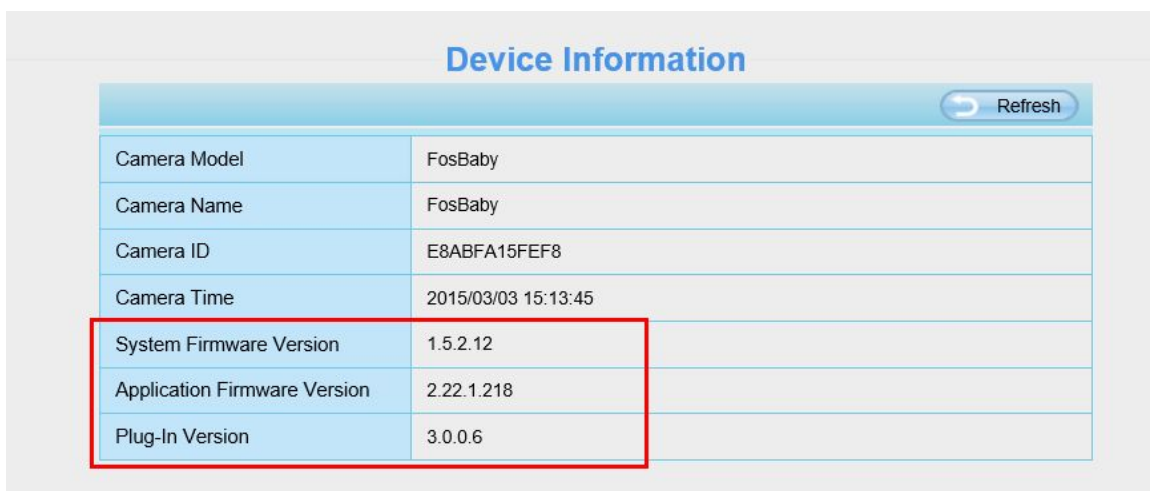
Step 3: Click **Browse** → choose **Step2_FosBabyIPC_B_sys_ver1.5.2.12.bin**, click **Open** → click **System Upgrade**.



Step 4: “Upgrading, do not power off ... Xs” pop up, camera IP will disappear from the IP Camera Tool. Then camera will reboot itself, DO NOT power off the camera, please wait till the camera IP reappear in the IP Camera Tool.



Step 5: Log-in your FosBaby again to check the **System Firmware Version**, **Application Firmware Version** and **Plug-In Version**.



Congratulations, your FosBaby successfully upgraded to the latest firmware!

Note:

1. You'd better re-install the plug-in, in case it did not upgraded.
2. The correct firmware version after upgrading:

System Firmware Version	1.5.2.12	
Application Firmware Version	2.22.1.218	
Plug-In Version	3.0.0.6	

End

--- by Foscam Technical Support Team